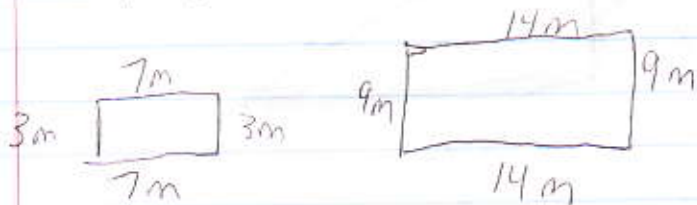


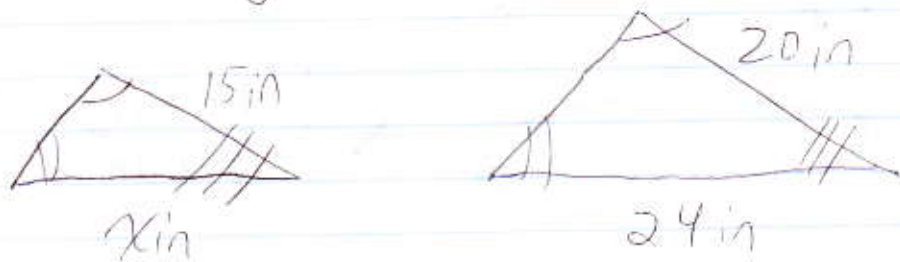
WarmUp : 8-7 Review

2/5

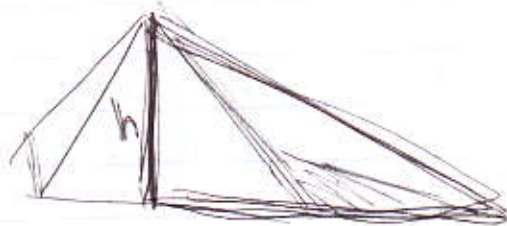
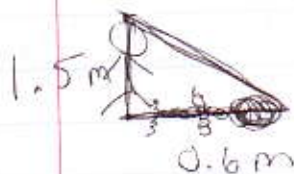
1. Tell whether the rectangles are similar



2. The triangles are similar. Find the value of x



Notes: 8-8 Indirect Measurement 2/5



$$\begin{array}{l} \text{height} \rightarrow 1.5 \text{ m} \\ \text{Shadow} \rightarrow 0.6 \text{ m} \end{array} = \begin{array}{l} x \leftarrow \text{height} \\ 56 \text{ m} \leftarrow \text{shadow} \end{array}$$

$$0.6(x) = 56(1.5)$$

$$\frac{0.6x}{0.6} = \frac{84}{0.6}$$

$$x = 140 \Rightarrow$$

The height of the pyramid is 140 m

Try: p 363 # 7-8

HW: p 363 (7-8) + 9-12