

WarmUp :

2/4

Find percent of change. Round to nearest percent.

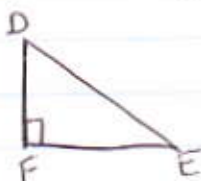
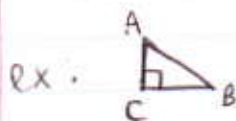
3.) original: 123 ; new: 214

4.) Find the sale price of a \$34.50 blouse at 30% off

5.) Mega electronics purchased a VCR for \$215. Find its selling price with a 25% markup.

Notes: 8-7 Triangles & Proportions 2/4

When 2 triangles are similar, the angles and sides will be similar

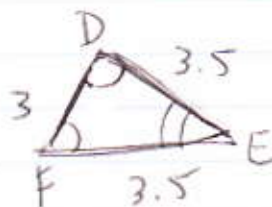
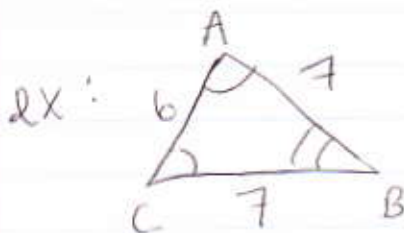


Triangle ABC \sim Triangle DEF

\sim symbol means "similar to"

→ You can find the length of a side of a triangle w/ a similar triangle by setting up a proportion

→ You name a side by using the letters of vertices (corners) it connects.



are they similar?

$$\frac{AB}{AC} = \frac{DE}{DF}$$

~~$$\frac{7}{6} = \frac{3.5}{3}$$~~

$$7 \cdot 3 = 6 \cdot 3.5$$

$$21 = 21 \checkmark \text{ Yes they are similar.}$$

HW: p 360

8, 11